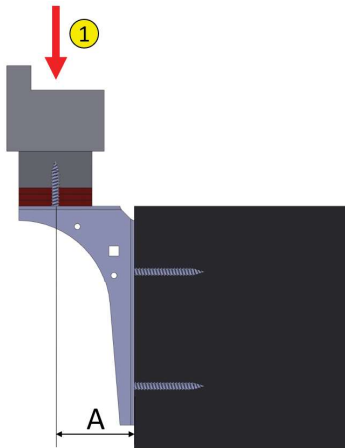


2.5. SLW - Heavy Load Angle

2

- simple and fast mounting of windows in the insulation layer
- high load transfer
- suitable for all window systems (aluminium, wood, plastic)
- insulation can be easily installed afterwards



SLW-60x180x2,5

ift-Rosenheim verification number

Tested for loads in the window layer: 17-001190-PR01 PB 02-K26-09-de-01

1	Article-No.	Article name [mm] length 1 x length 2 x material thickness	overhang A	maximum load	Units
	K-405200	SLW-60x180x2,5	35 mm	213 kg	10
K-405201	SLW-95x180x2,5	70 mm	213 kg	10	
K-405201-2	SLW-110x150x2,5	70 mm	213 kg	10	
K-40520128	SLW-110x250x2,5	70 mm	213 kg	10	
K-405201-1	SLW-120x200x2,5	110 mm	172 kg	10	
K-405202	SLW-150x200x2,5	110 mm	172 kg	10	
K-40520210	SLW-150x250x2,5	110 mm	172 kg	10	
K-405204	SLW-180x200x2,5	150 mm	301 kg	10	
K-405202-1	SLW-200x250x2,5	150 mm 200 mm	301 kg 157 kg	10	
K-405203	SLW-200x300x2,5	150 mm 200 mm	301 kg 157 kg	10	
K-40520501	SLW-200x350x2,5	follows	follows	10	
K-40520522	SLW-250x400x2,5	follows	follows	10	
Scope of delivery per item: 5x left, 5x right					

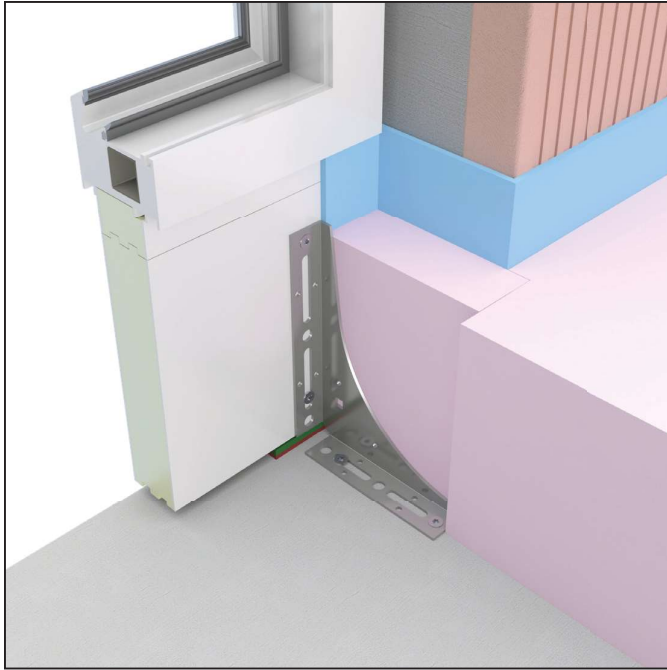
Installation Instruction - Anchor Mounting in front of the Facade / Pre-Wall Installation

Step 1

The Heavy Load Angles are fixed to the masonry. Then the window is placed onto the Heavy Load Angles and is aligned with mounting blocks.

Step 2

The Heavy Load Angle is fixed to the window from below.

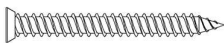


SLW-mounting at the connection profile



For information on the topic of "Fastening of connection profiles", see page 64.

Associated products



Window Mounting Screws
page 134



Dowels
page 136

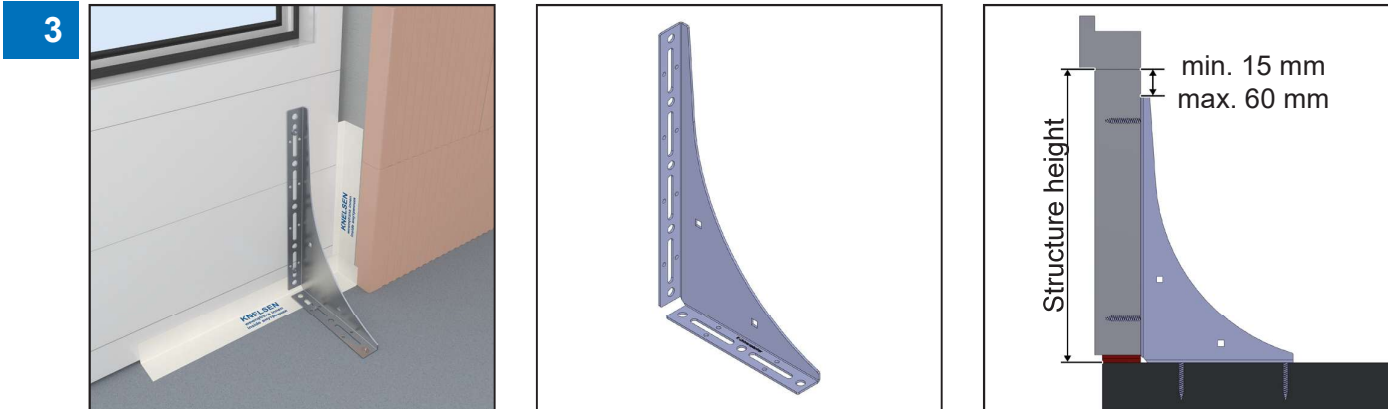


Drills
page 144



Adjusting Element
page 72

3.3. SLW - Heavy Load Angle



Article-No.	Article name [mm]	Structure height [mm]	Units
K-405202	SLW-150x200x2,5	165 - 210	10
K-40520210	SLW-150x250x2,5	165 - 210	10
K-405202	SLW-150x200x2,5	215 - 260	10
K-405203	SLW-200x300x2,5	215 - 260	10
K-40520501	SLW-200x350x2,5	215 - 260	10
K-40520210	SLW-150x250x2,5	265 - 310	10
K-40520522	SLW-250x400x2,5	265 - 310	10
K-405203	SLW-200x300x2,5	315 - 360	10
K-40520501	SLW-200x350x2,5	365 - 410	10
K-40520522	SLW-250x400x2,5	415 - 460	10

With the SLW, position changes of up to 5.0 mm are possible.