

SMART PVC Baseboard Profile PRAKTIKA Installation Guide

- The PVC baseboard profile PRAKTIKA is installed after the base and facade insulation have been applied. The ribbed plastic edge of the profile should be pressed tightly between the base and facade insulation horizontally. Following this, the fiberglass mesh is reinforced up to the line indicated in Figure 1.
- The profiles are connected using the pre-installed connector from the manufacturing process
- For building corners, special cutting shears or a saw should be used to adjust the profile to the correct angle.
- The wall-mounted fiberglass mesh must reach the marked red line as shown in the diagram Figure 1.

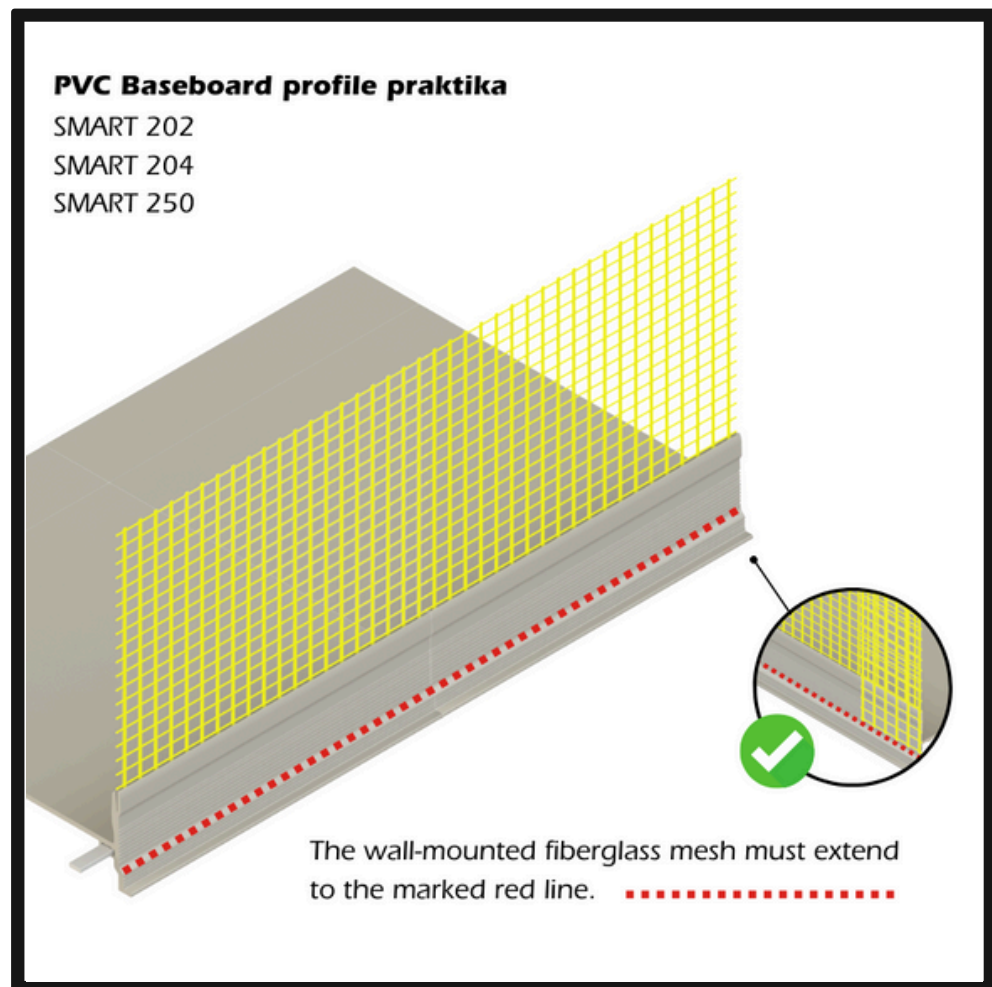
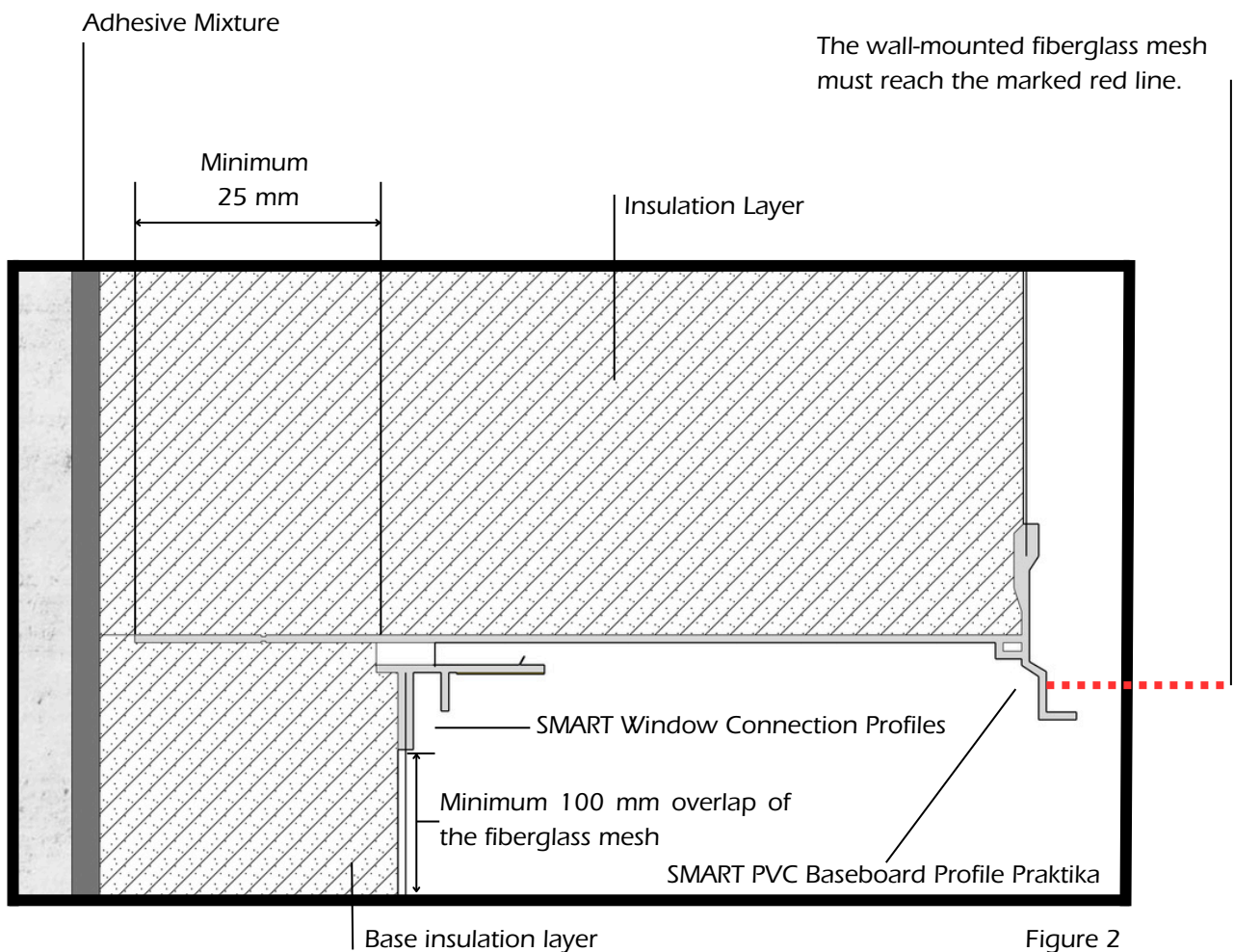


Figure 1

SMART PVC Baseboard Profile PRAKTIKA Installation Guide

- When installing the SMART PVC baseboard profile, ensure that the profile is pressed into the insulation layers by at least 25 mm, as shown in Figure 2.



Waste Disposal:

The profile cutting residues should be disposed of according to local construction waste regulations (e.g., EWC 17 09 04).